

# In search for a new vaccine against the salmon louse (*Lepeophtheirus salmonis*)

Christiane Eichner<sup>1</sup>, Heidi Kongshaug<sup>1</sup>, Michael Dondrup<sup>2</sup>, Erna Irene Hegglund<sup>1</sup>, Frank Nilsen<sup>1</sup>

(1) Department of Biological Sciences, University of Bergen, Norway  
(2) Department of Informatics, University of Bergen, Norway

christiane.eichner@uib.no

## Lepeophtheirus salmonis

The salmon louse is an ectoparasitic copepod, feeding on salmonid fish. Its life cycle is characterized by a high reproduction rate required for the low density of natural occurring hosts. However, the introduction of fish farming in the northern hemisphere with high densities of Atlantic salmon standing in coastal regions all year round has changed the host availability leading to an increased number of reproductive lice making *L. salmonis* a threat for wild salmon and sea trout and a major problem to the fish farming industry.

## Live cycle of *L. salmonis*

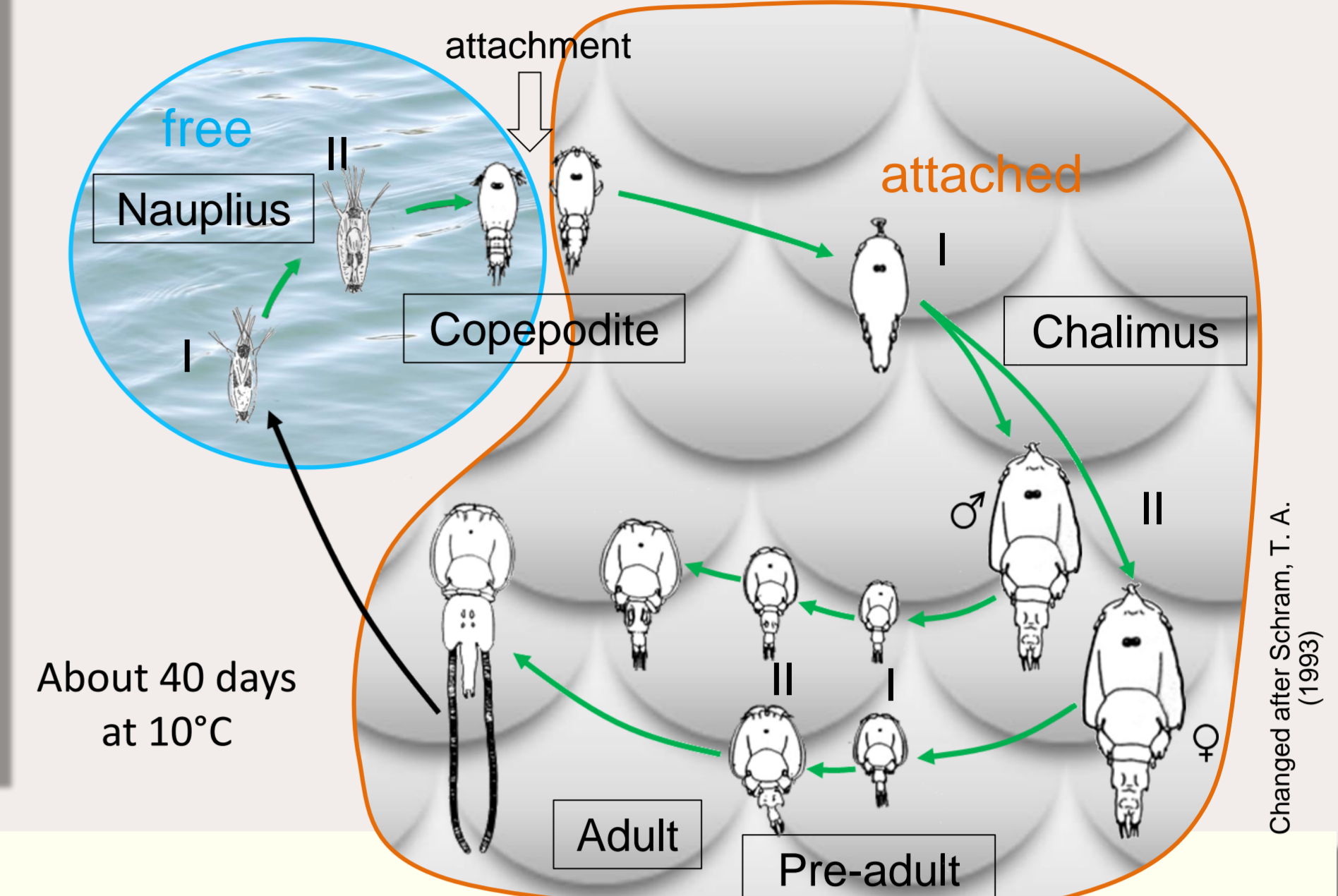


Foto: Lars Hamre



Adult female *L. salmonis*

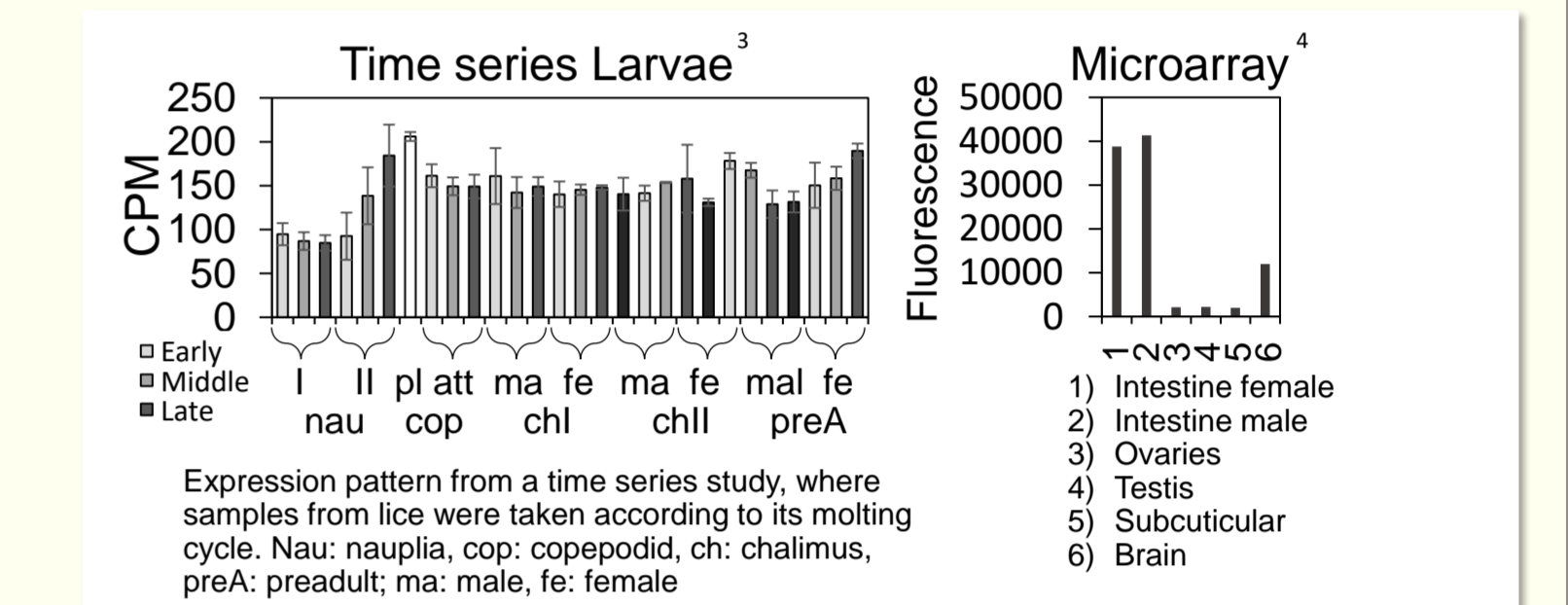
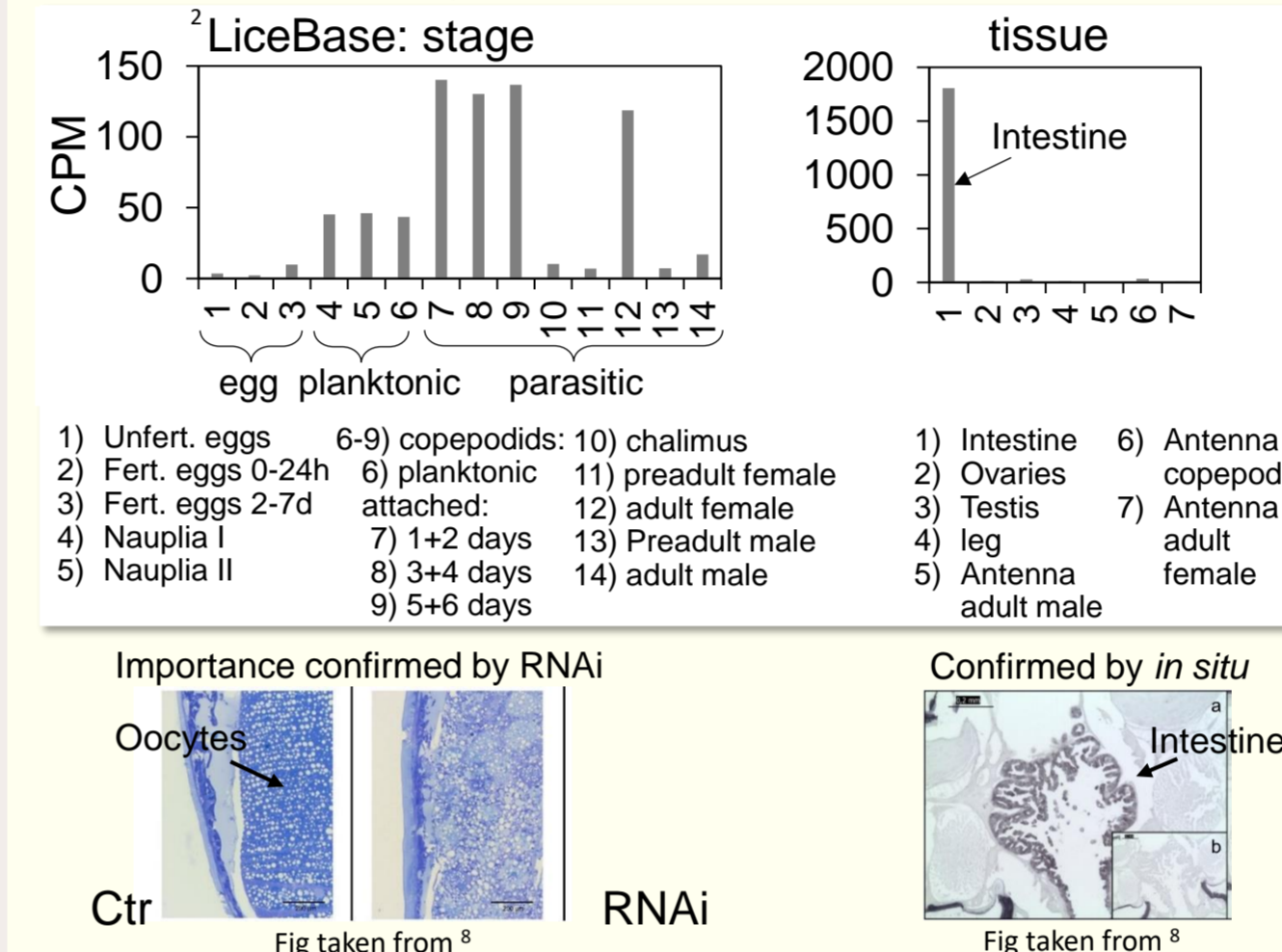
## Introduction

Today both chemical and mechanical delousing methods against the salmon louse are used, which resulted in both resistance against common delousing agents as well as shows negative impact on the environment and fish welfare. The demand for the development of new solutions is high. Use of fish vaccines against bacteria and virus diseases has led to strong

reduction of medicine use in aquaculture. Also a vaccine against the ectoparasitic salmon louse would be the best preventive measure to combat the parasite. However, to develop vaccines against parasites<sup>1</sup>, especially ectoparasites is challenging. Until now there is only one commercial available vaccine against a metazoan ectoparasite.

## Gene expression

### Gene expression (Example #1)



Genes were chosen according to expression pattern:  
• In the intestine  
• Expressed in parasitic lice

- #1 Ferritin<sup>8</sup>
- #2 Scavenger receptor<sup>9</sup>
- #3 mixture dry protein
- #4 Chitin synthase<sup>10</sup>
- #5 V-type proton ATPase subunit
- #6-8 Sodium/potassium-transporting ATPase subunit

## Identification of suitable antigenic targets

### Problem

Generally demanding to develop vaccines against ectoparasites

- Limited **contact area** between parasite and the immune system of its host compared to bacteria, virus or enteroparasites
- Mechanism for **suppression of hosts immune defence** (e.g. antigenic variation; secreted bioactive molecules counteracting the host's haemostatic, inflammatory and immune mechanisms) have to be bypassed

### Requirement

- associated with some **vital function** of the louse
  - Antilice effects expressed as lice or egg/offspring mortality, decreased engorgement or egg string length, or inhibition of moulting
- Type of antigen:
  - **Exposed antigens** that are secreted in saliva during attachment and feeding on a host (proteins or peptides synthesized in the salivary glands, taken up at feeding site by host dendritic cells)
  - **Concealed antigens** that are normally hidden from host immune mechanisms (encounters immunoglobulins, typically found on the gut wall and interact with specific immunoglobulins taken up in the blood meal)
- Has to **trigger the host immune defence**

### Approaches

#### Investigating the site of expression

- Gene expression data as source for candidate choice (LiceBase<sup>2</sup>, earlier RNA seq- and microarray experiments, e.g. time series<sup>3</sup>, microarray tissue<sup>4</sup>, microarray maturation and egg production<sup>5</sup>)
- Confirmation with in situ

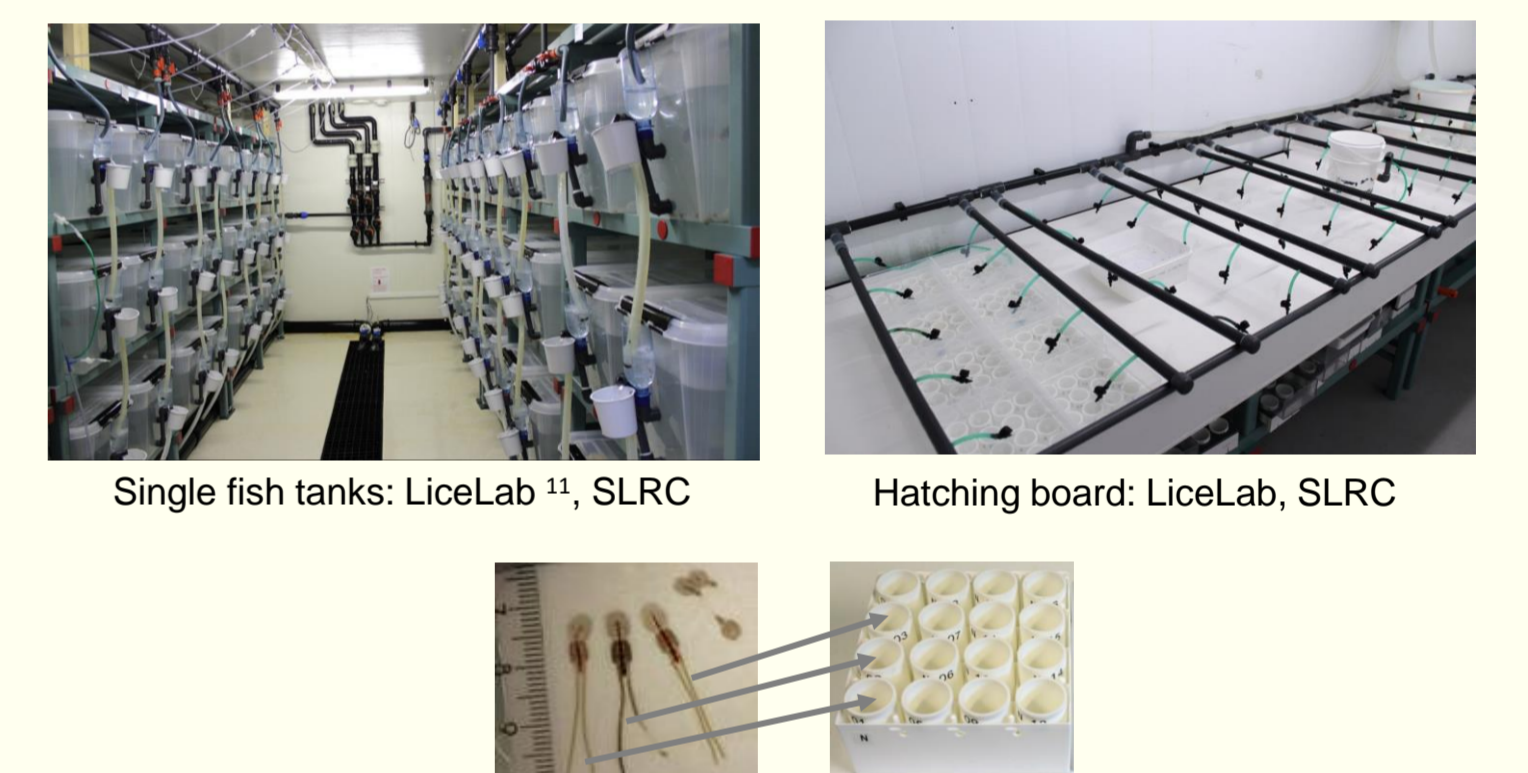
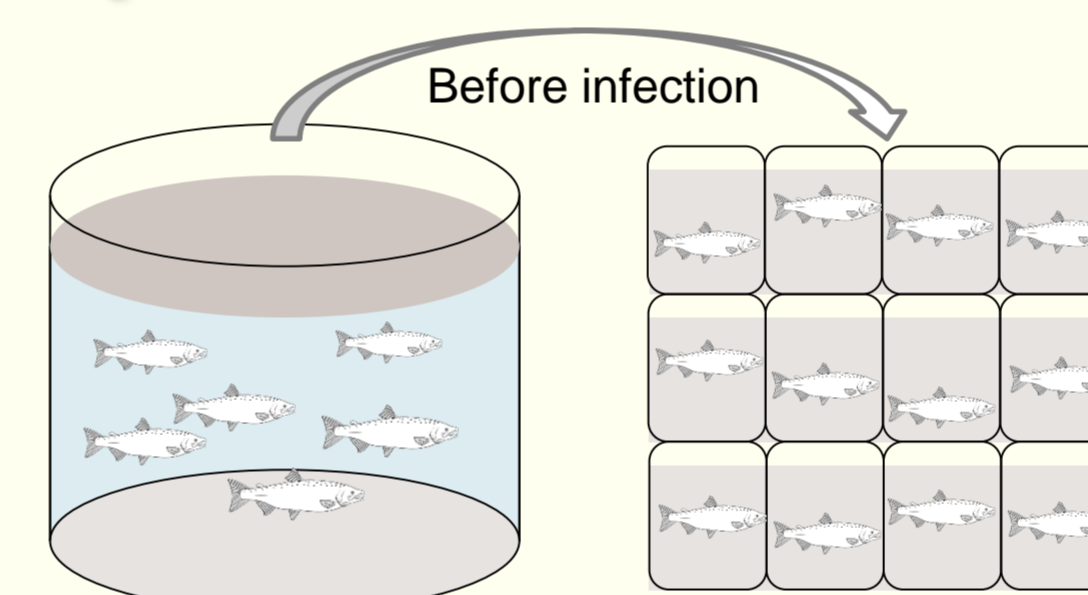
### Importance

- RNA interference studies<sup>6,7</sup>
  - Gene knock-down of target gene and evaluation of fitness of the louse

## Conclusions

- Targets were chosen which fulfilled the ad hoc requirements.
- Test vaccines were investigated in vaccine trials.
- However, none of the targets showed the desired effect on lice survival or reproduction of the salmon louse under given circumstances.
- High variability in lice numbers lead to low power of the experimental set-up.

## Experimental set-up



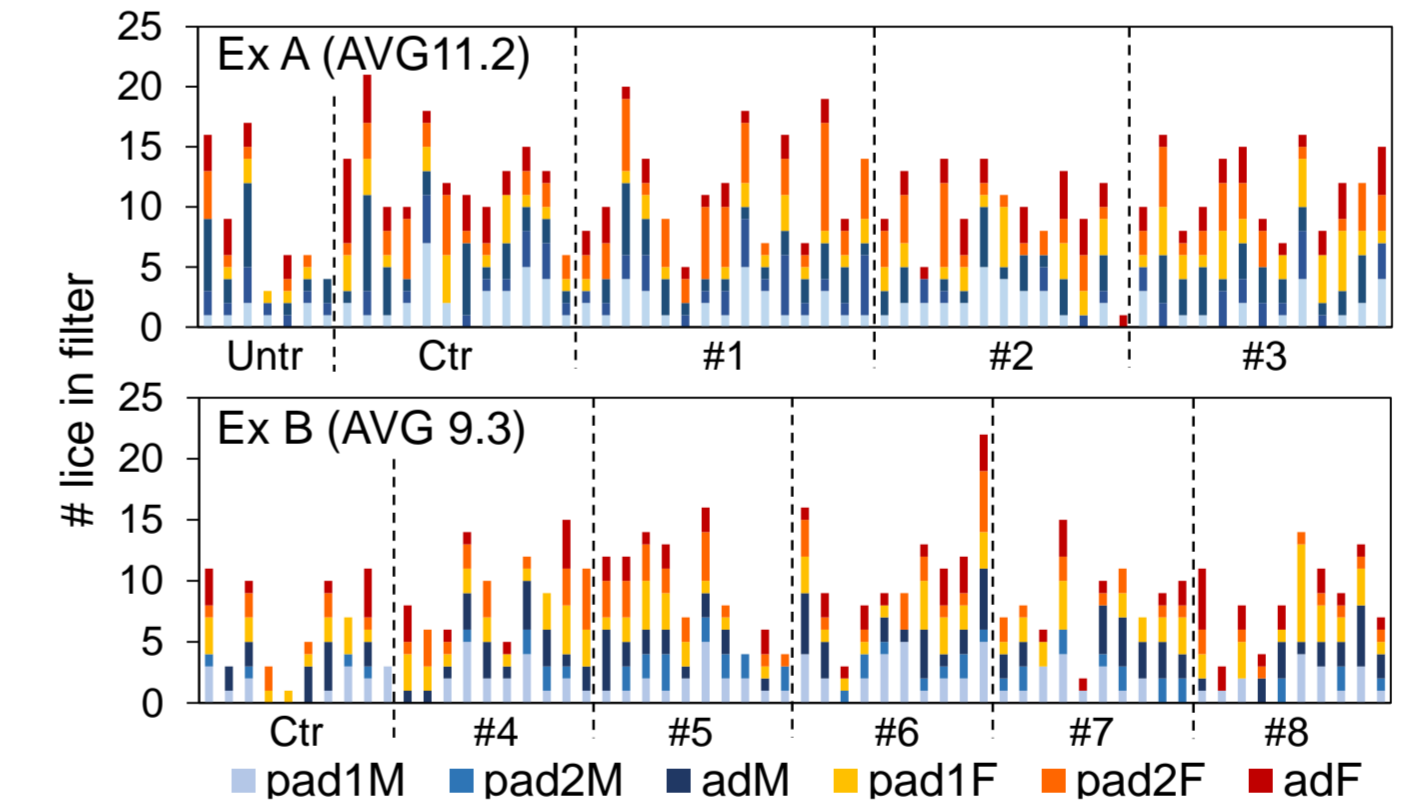
- Vaccination and smoltification in common tank (individually marked fish), infection trial in single fish tanks

- Evaluation of reproduction
  - Length measurement, hatching success

## Results

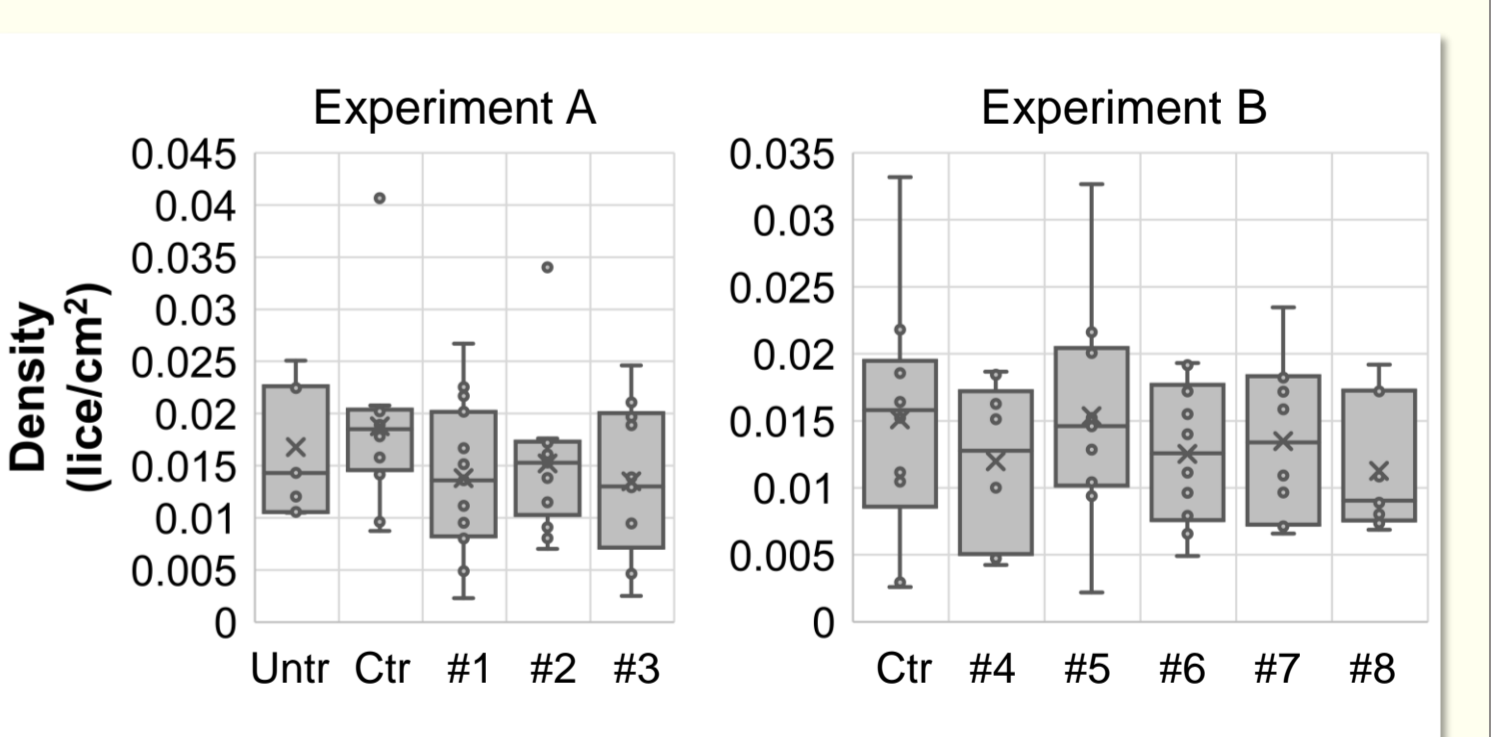
### Lice numbers

#### Lice falling off the fish



➤ No significant differences between groups in the amount of lice falling from the fish

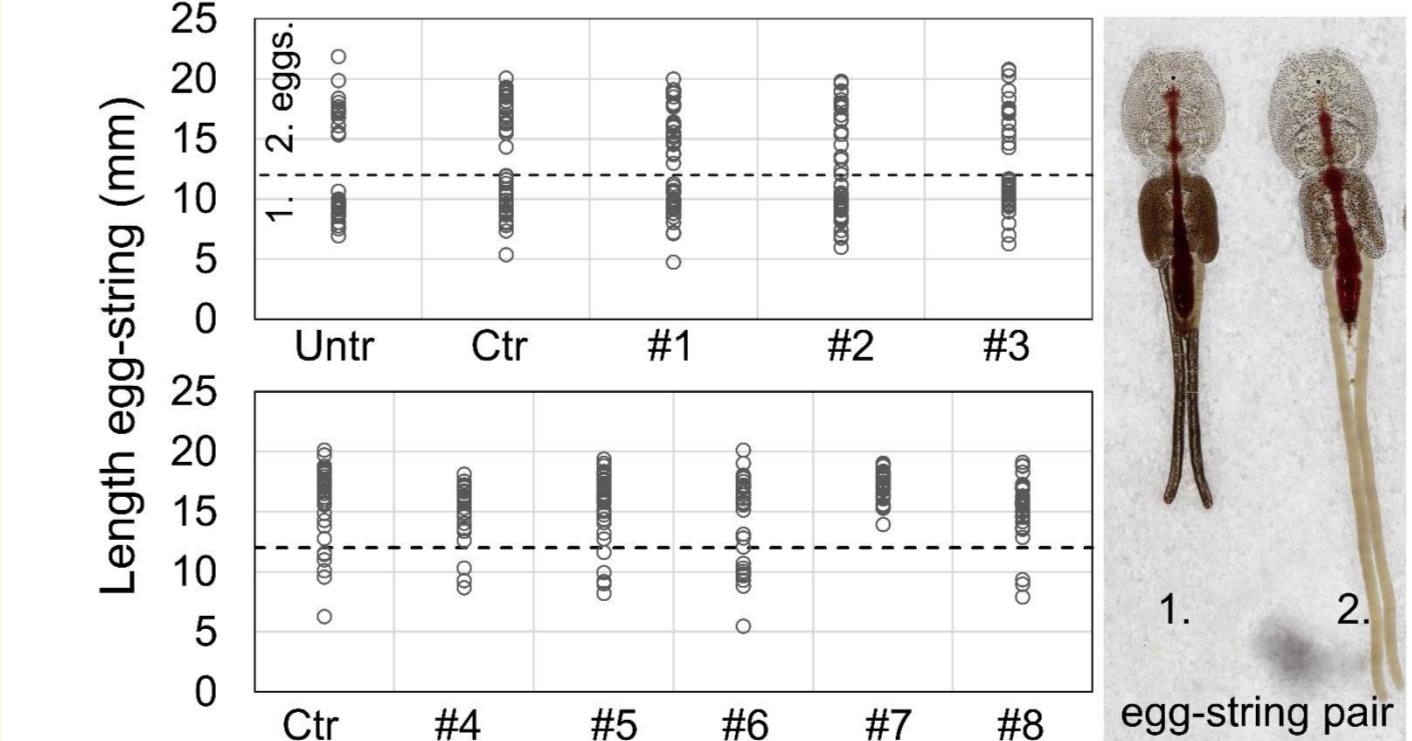
#### Density of lice at sampling



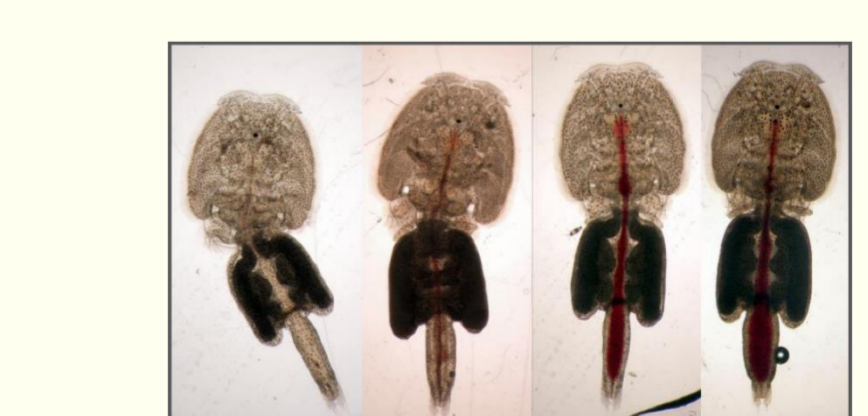
➤ No reduction could be seen, except a minor effect for test vaccine #2 against control (but not untreated). High variation in lice numbers lead to low statistical power.

### Other lice parameters

#### Reproduction



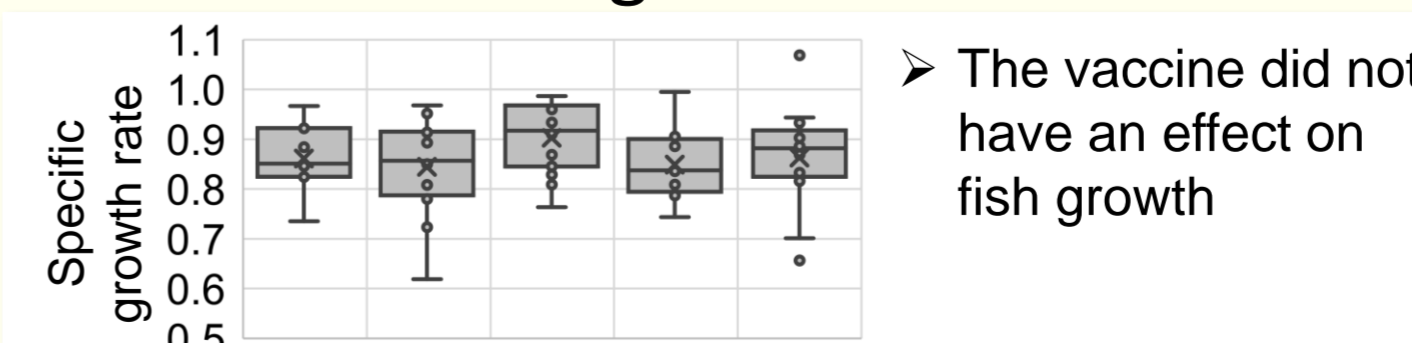
#### Engorgement



➤ No significant difference between groups in:  
➤ Egg string length  
➤ Hatching success  
➤ Engorgement of blood

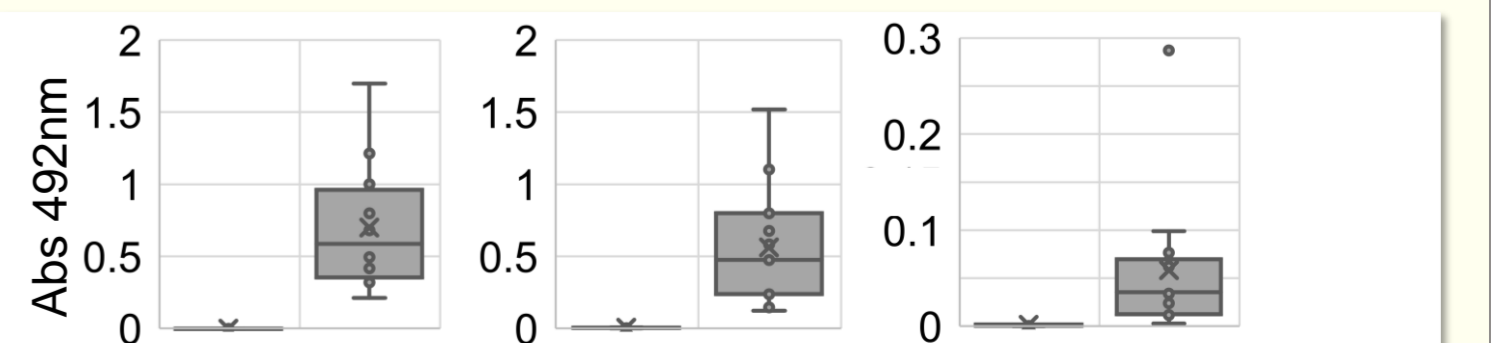
### Fish parameter

#### Effect on fish growth



➤ The vaccine did not have an effect on fish growth

#### Antigen production (ELISA)



## ACKNOWLEDGEMENTS

This project was funded by the Norwegian Seafood Research Fund (project number 901510) and carried out in collaboration with the SFI-Sea Lice Research Centre (grant number 203513, Research Council Norway).



## REFERENCES

- 1) Maizels RM. Journal of biology 2009; 8(7):62.
- 2) Lice Base: <https://licebase.org>
- 3) Eichner C, Dondrup M, Nilsen F. Journal of Fish Diseases 2018; 41(6):1005-1029.
- 4) Edvardsen RB, Dalvin S, Furmanek T, Malde K, Maehle S, Kvamme BO, Skern-Mauritzen R. Mar Genomics 2014; 18 Pt A:39-44.
- 5) Eichner C, Frost P, Dyvik B, Jonassen I, Kristiansen B, Nilsen F. BMC Genomics 2008(9):126. RNAi
- 6) Dalvin S, Frost P, Bleiering E, Hamre LA, Eichner C, Krossoy B, Nilsen F. International Journal for Parasitology 2009; 39(13):1407-1415.
- 7) Eichner C, Nilsen F, Grotmol S, Dalvin S. Experimental Parasitology 2014; 140:44-51.
- 8) Hegglund, E. I., C. Tröise, C. Eichner, et al., 2019a. Molecular and Biochemical Parasitology, 232, 111197.
- 9) Hegglund, E. I., C. Eichner, S. I. Støve, et al., 2019b. Sci Rep, 9(1), 4218.
- 10) Harðardóttir, H. M., R. Møte, F. Nilsen, et al., 2019. Comparative Biochemistry and Physiology Part A: Molecular & Integrative Physiology, 227, 123-133.
- 11) Hamre, L. A., K. A. Glover and F. Nilsen, 2009. Parasitology International, 58(4), 451-460.

UNIVERSITY OF BERGEN

