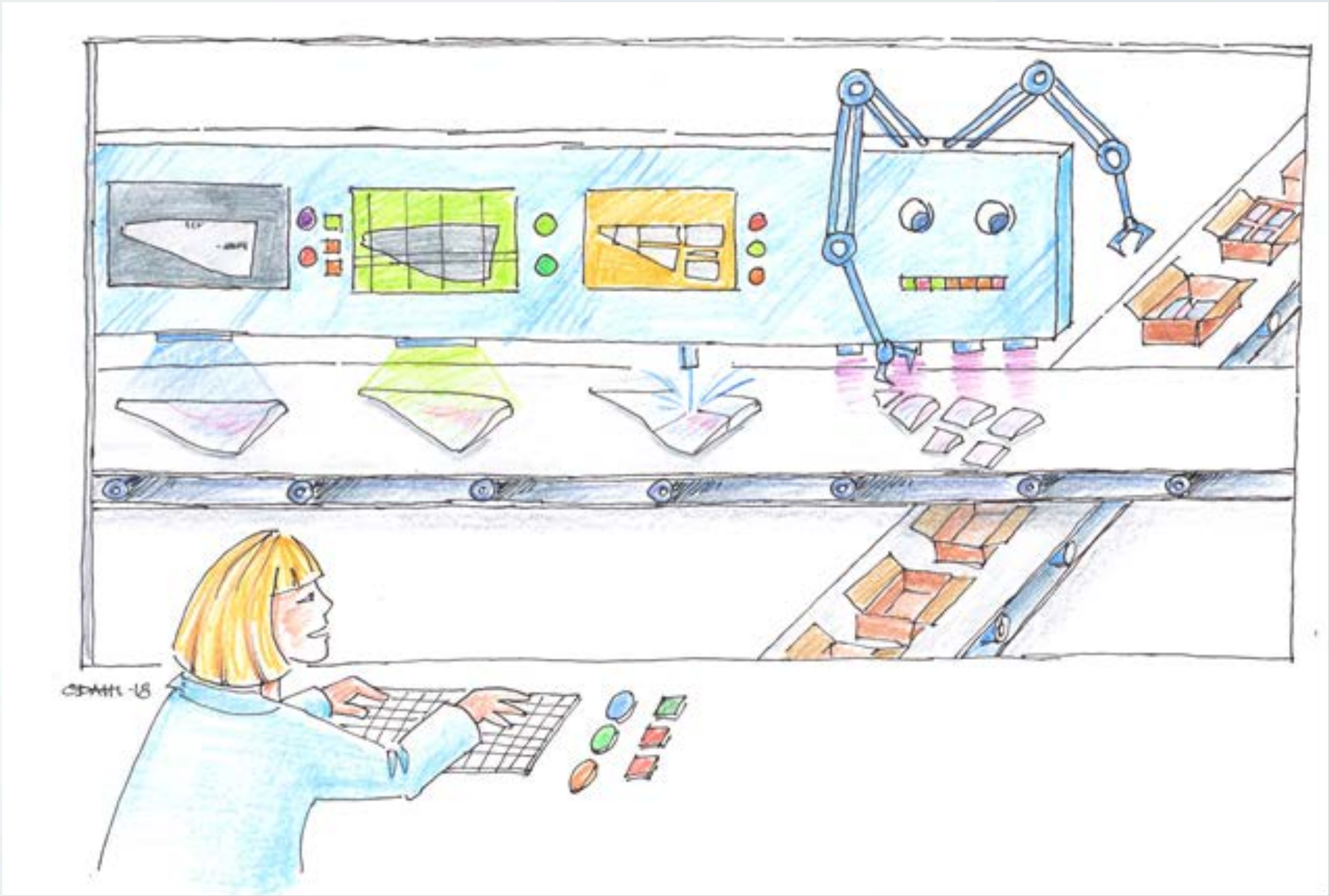


Robot på filètlinja

Silje Kristoffersen
Harry Westavik





Råstoff





Gammel maskin



Ny maskin



Skinning



Dyp-skinning





1411 gr.



653 mm.



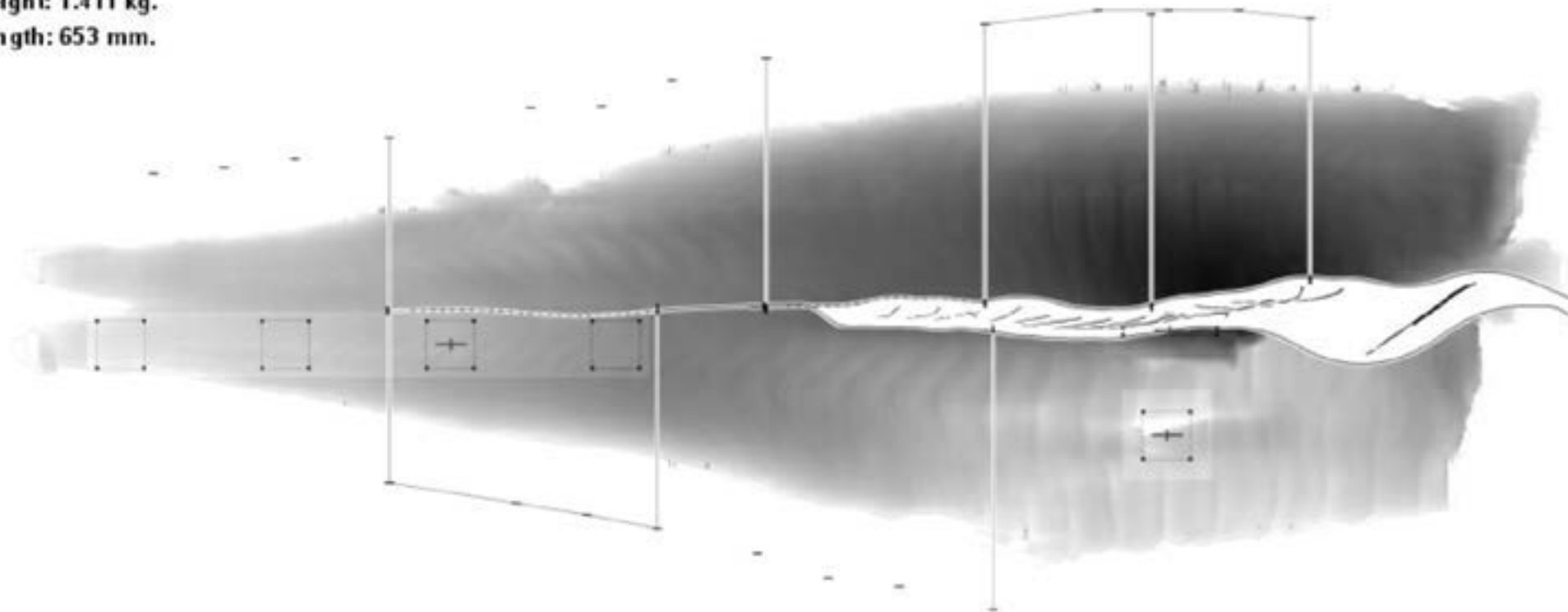
	Basic	Belly	Loin	Pinbone	Tail
#1	164	178	162	95	80
#2	86		157		
#3			157		
#4			157		
#5			144		
%	18.1	12.9	56.3	6.9	5.8

2018-03-14: 10:47:36

PieceID: 2716

Weight: 1.411 kg.

Length: 653 mm.





Rapport

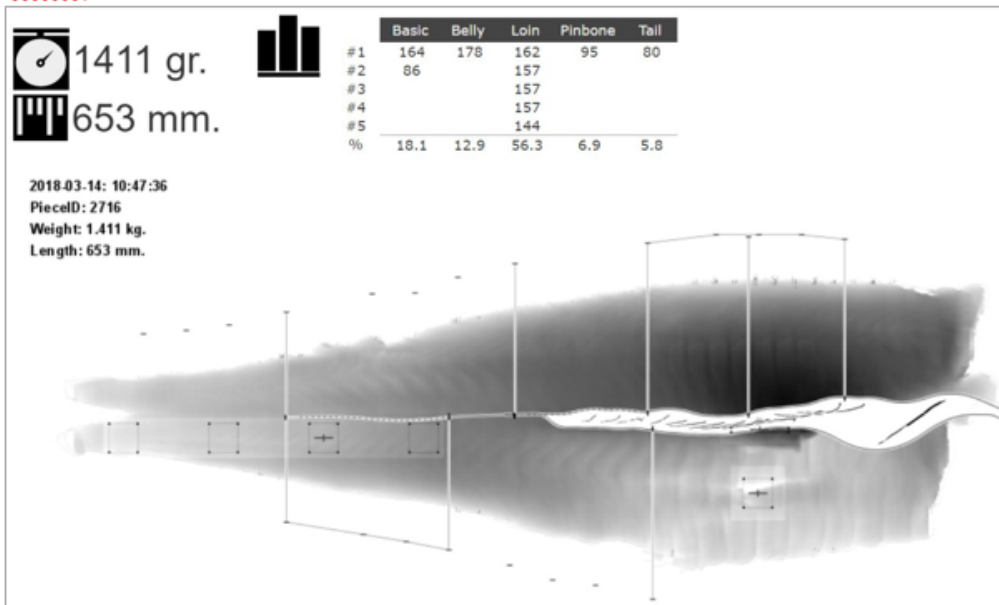
Videreføring Pilotprosjekt; Filét i Norge

Evaluering av en "state of the art" hvitfisk filetlinje

Forfattere

Harry Westavik (SINTEF)

Silje Kristoffersen (Nofima), Tatiana Ageeva (Nofima), Morten Bondø (SINTEF), Gustav Martinsen (Nofima), Cecilie Salomonsen (SINTEF) og Erlend Indergård (SINTEF)



Takk for oppmerksomheten

www.nofima.no

