

# Har norsk sjømat sitt på det tørre?

Fisk 2006

Truls Gulowsen, Greenpeace



Noorsje''

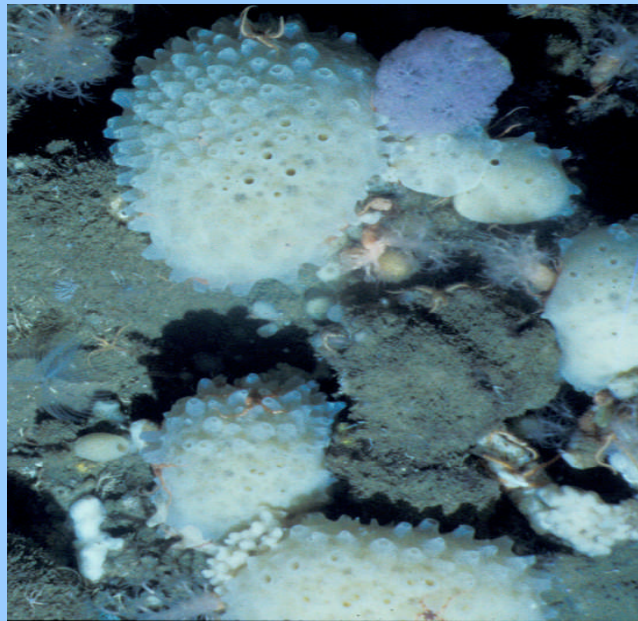
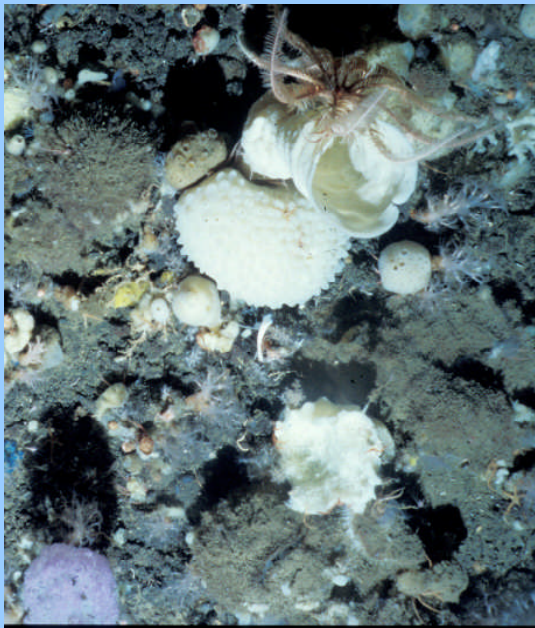
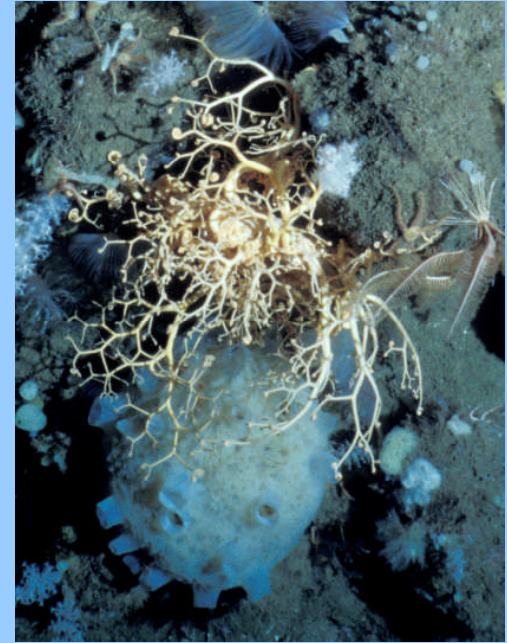


**NORGE**  
**SEAFOOD FROM NORWAY**

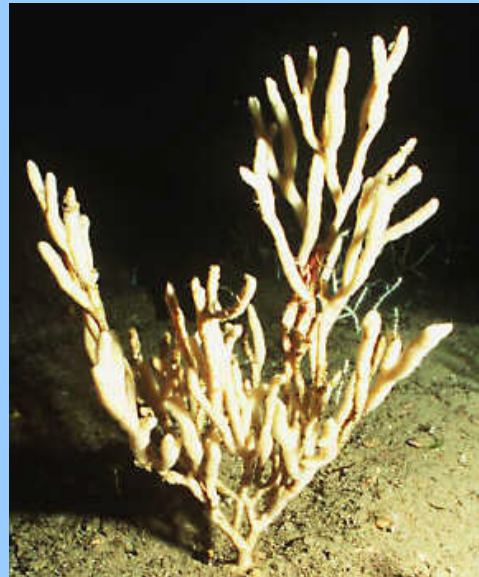
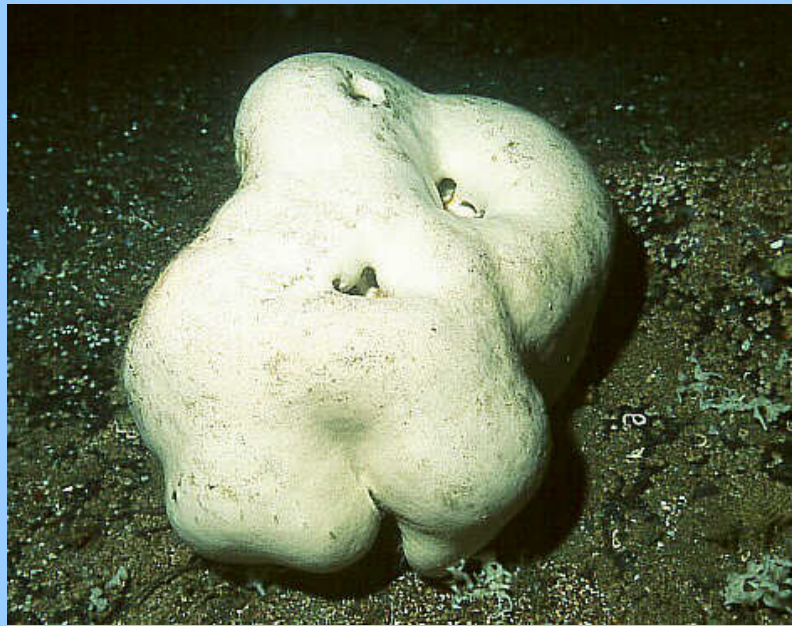
Torsk, hyse, jomfruhummer, flyndre,  
reker etc kommer fra havet:



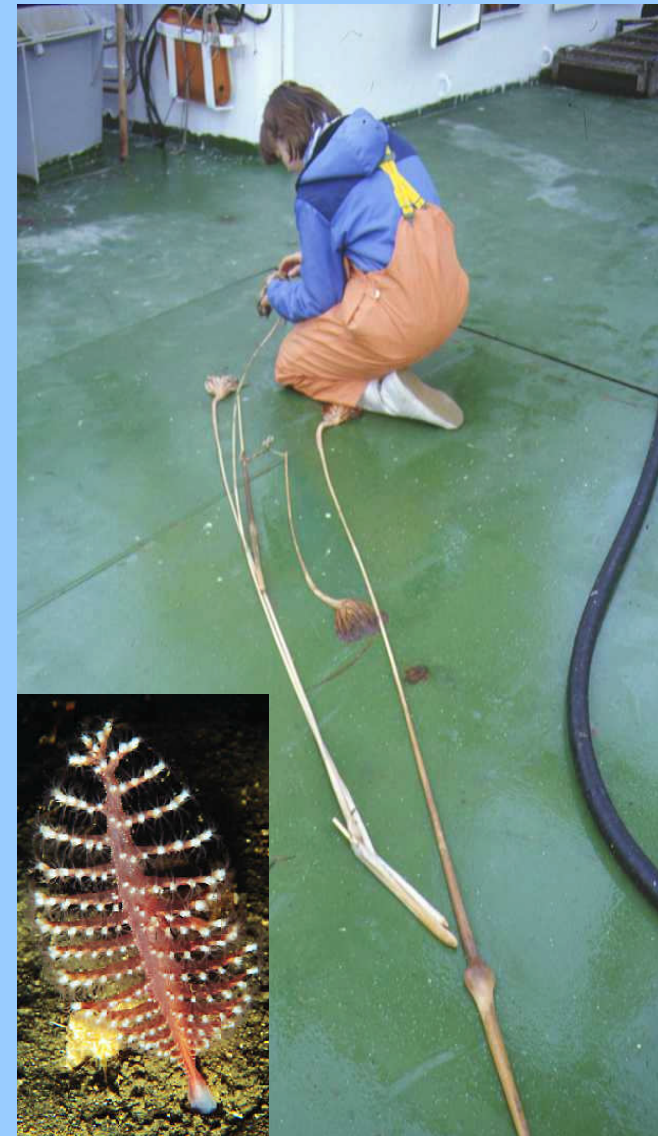
Dette finnes på bunnen:



Og dette:



# Og dette:



# Og koraller

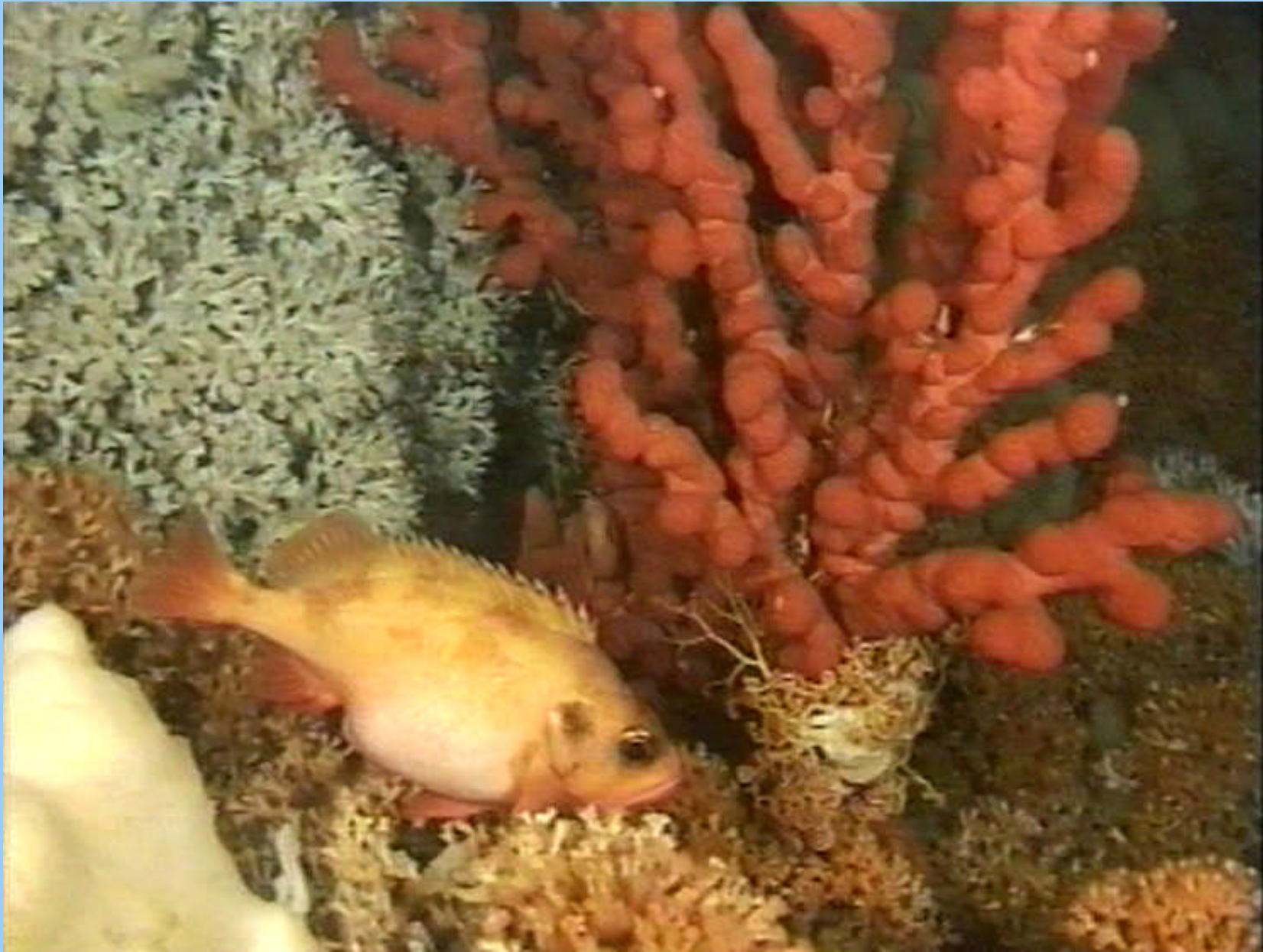


# Sånne





# Eller sånne – eller andre



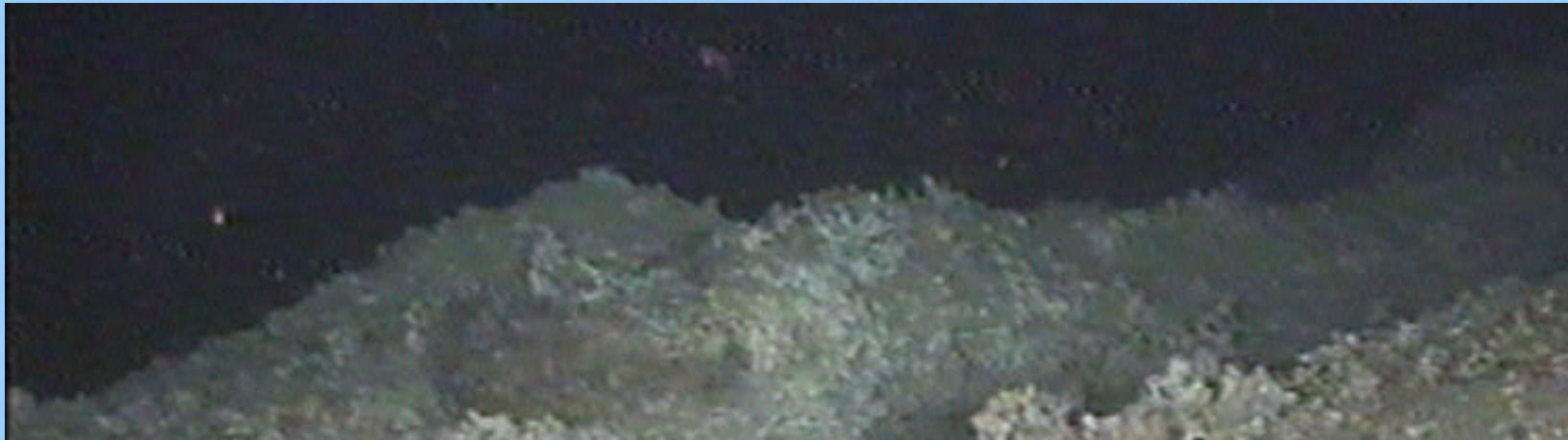
Koralltrål opp?



**NORGE**  
SEAFOOD FROM NORWAY



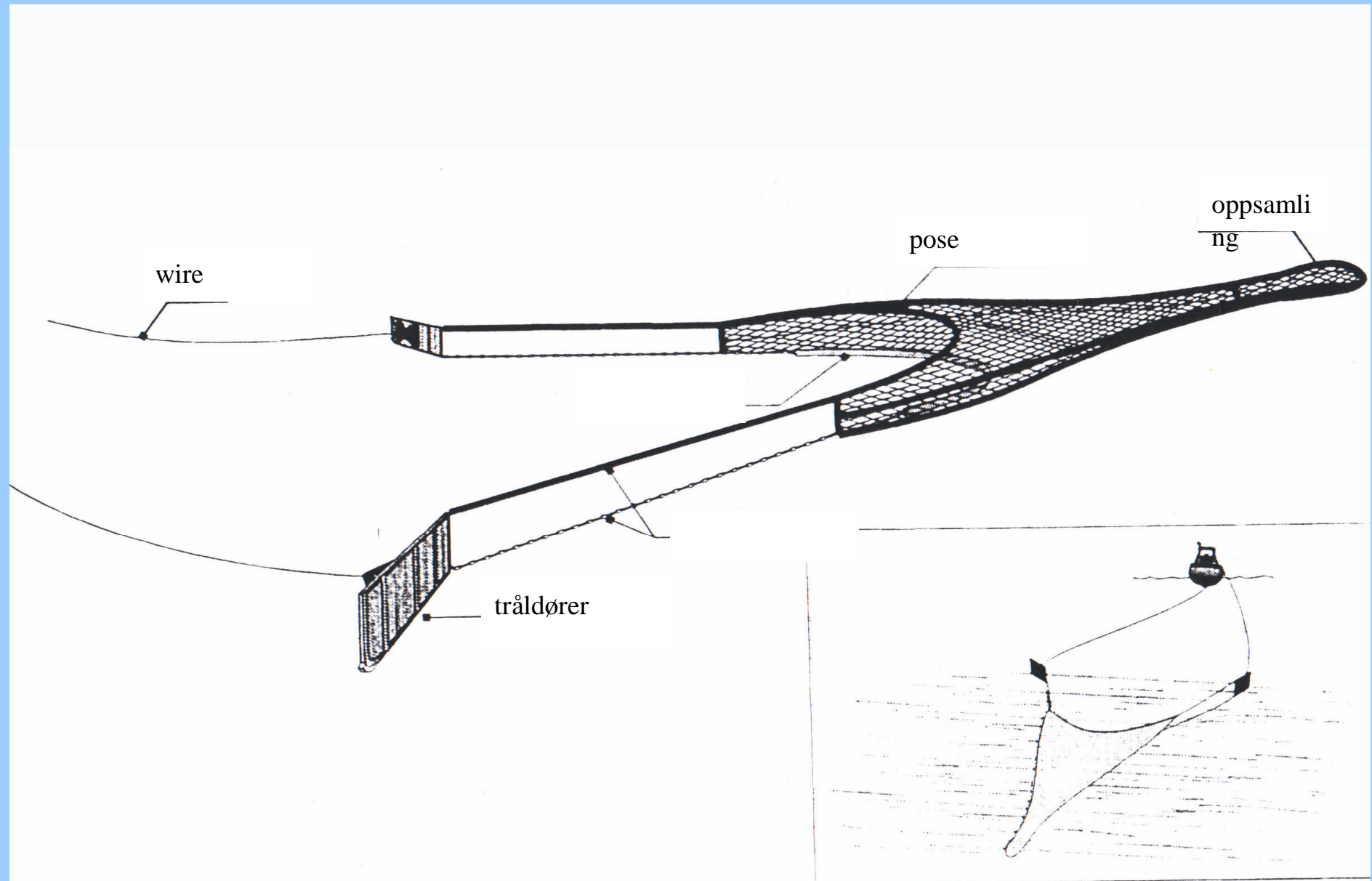
Eller rett gjennom...



**NORGE**  
SEAFOOD FROM NORWAY



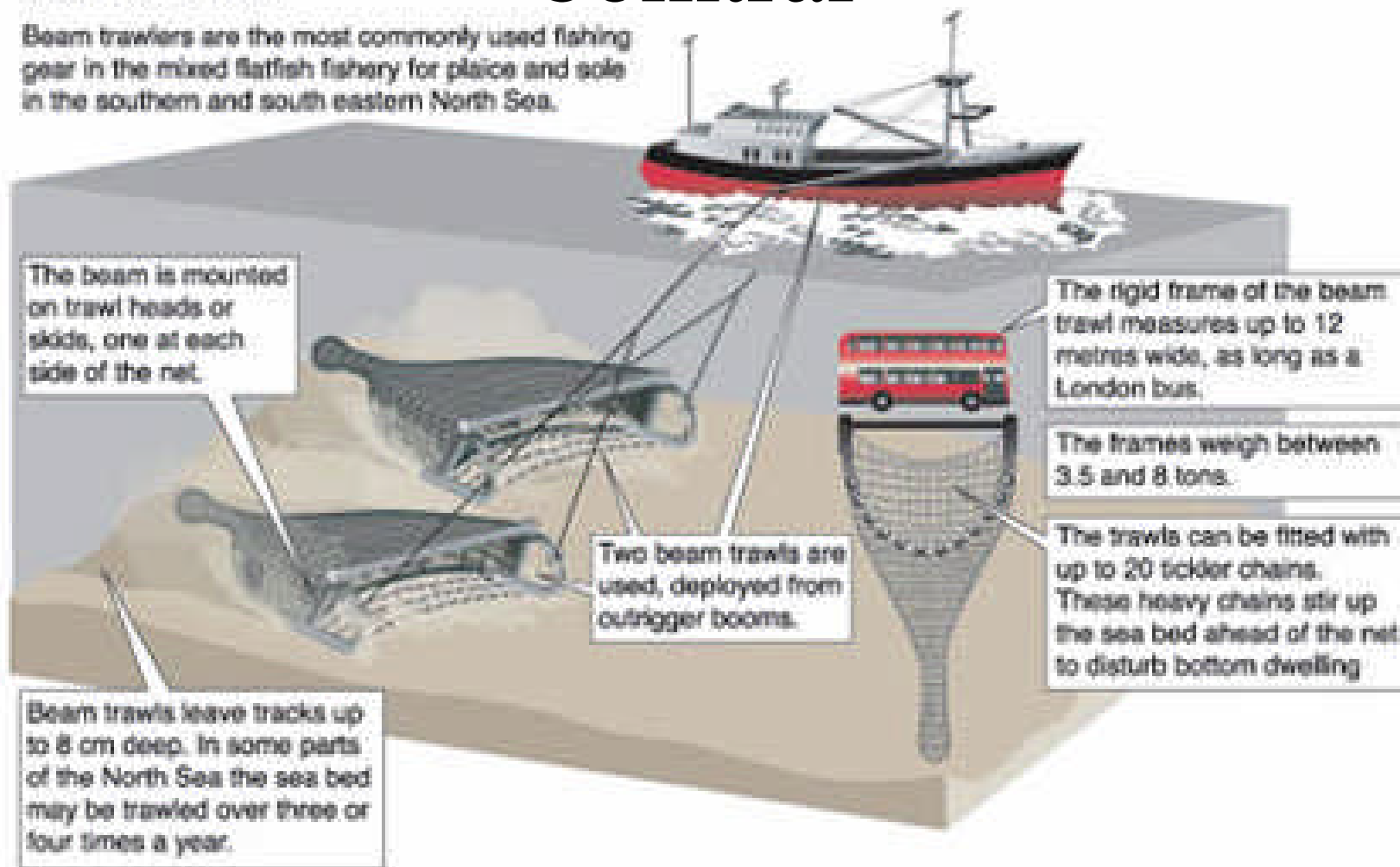
# Bunntrålskisse



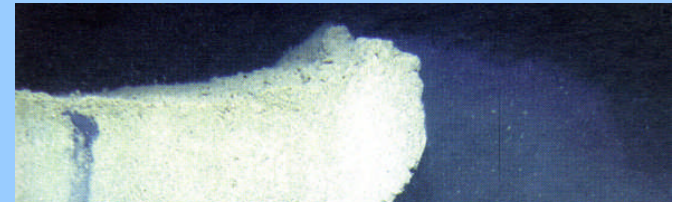
# bomtrål

A beam trawl is a trawl where the mouth of the net is held open by a metal beam. This is dragged along the ocean floor scooping up everything in its path from fish to cold water corals and shellfish.

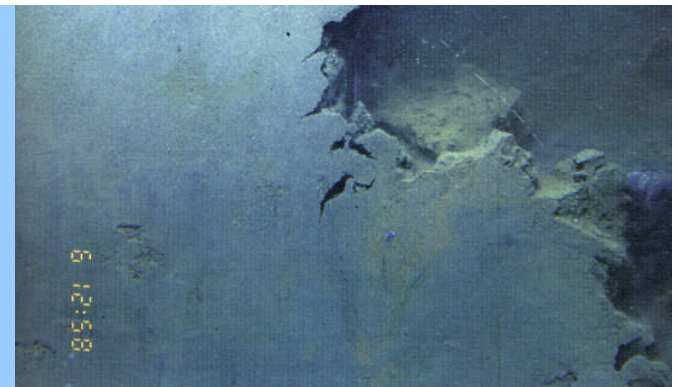
Beam trawlers are the most commonly used fishing gear in the mixed flatfish fishery for plaice and sole in the southern and south eastern North Sea.



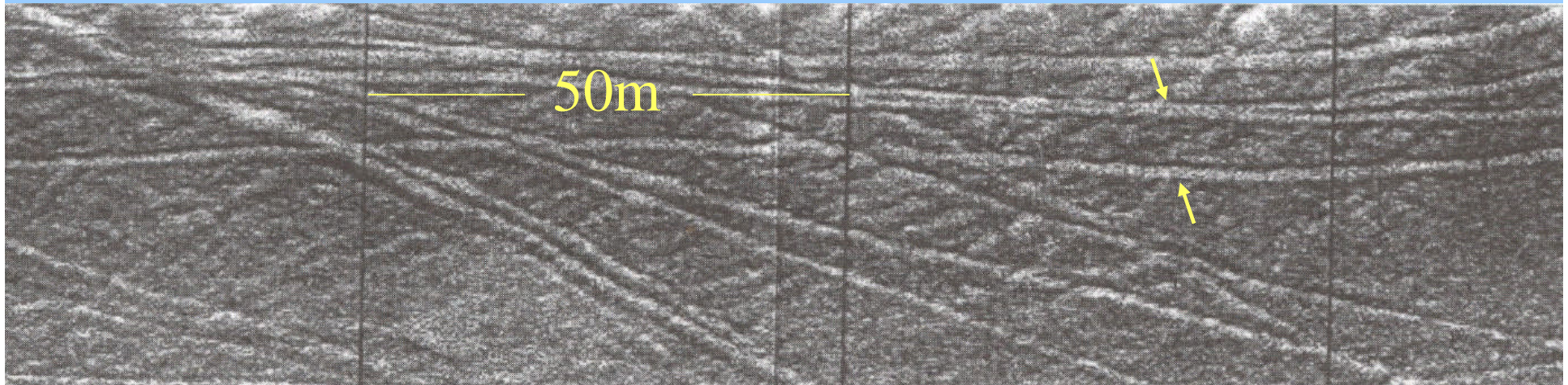
# Tråldører lager også riper



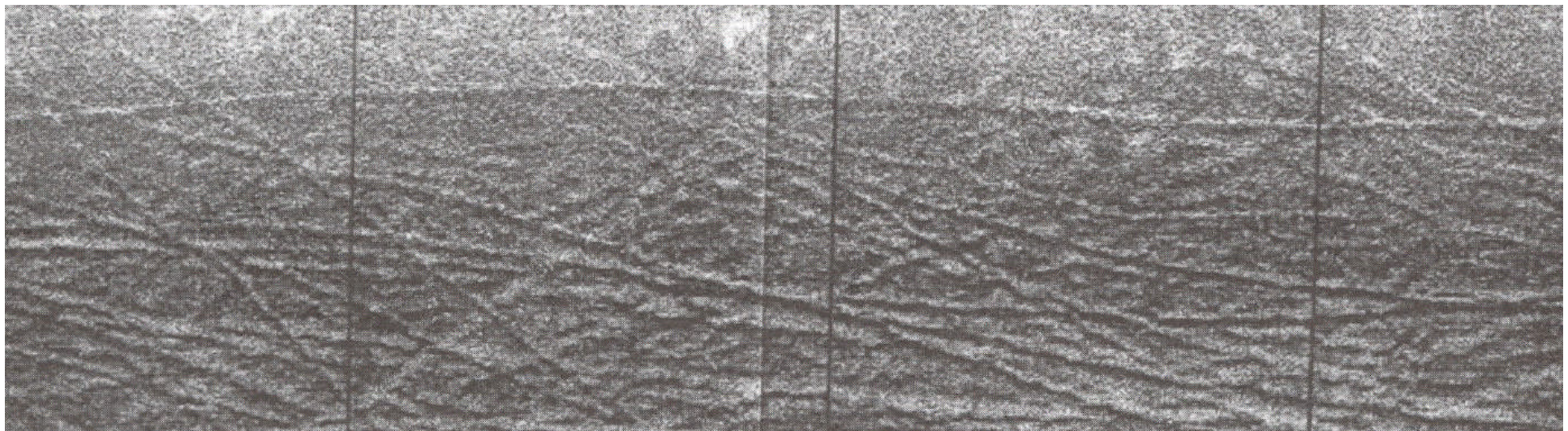
**NORGE**  
SEAFOOD FROM NORWAY



# Trålspor på bunnen



**NORGE**  
SEAFOOD FROM NORWAY



# Skjellbunn



**NORGE**  
SEAFOOD FROM NORWAY





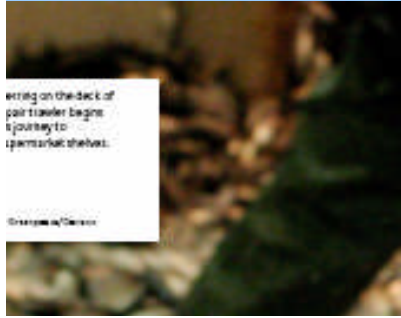
Annen bifangst.



**NORGE**  
SEAFOOD FROM NORWAY



# Mer...



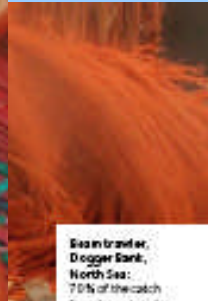
...ing on the deck of  
pair trawler begins  
journey to  
supermarket shelves.

© Greenpeace/Debian



Supermarkets must  
clearly label their  
seafood with details  
of the species name,  
place of capture, and  
method of catch.

© Greenpeace/Debian

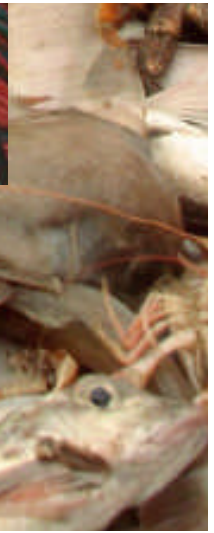


Sea in trawler,  
Dogger Bank,  
North Sea:  
70% of the catch



# NORGE

SEAFOOD FROM NORWAY



# Sjøstjerner

Spiseorgie  
i knuste  
skjell etter  
tråling...



# Etter neste trålrunde...



**NORGE**  
SEAFOOD FROM NORWAY

© 2011 NORGE SEAFOOD FROM NORWAY  
All rights reserved. Reproduced  
with permission of CEFAS

20 11:58

## 'Norsk torsk' er også:

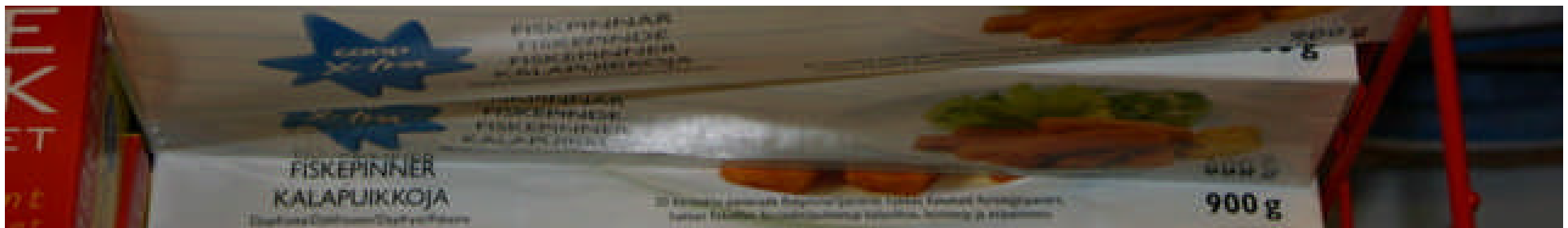
- Overfisket (kysttorsk, nordsjøtorsk)
- Ulovlig fisket (Barentshavet)
- Langreist (via Kina?)
- Ansvarlig for blant annet bunnskader på korall, sjøbunn, skjell, sjøstjerner, bifangst og høye CO<sub>2</sub>-utslipp, avhengig av **fangstmetode**



# (Stjålet) Fra Barentshavet og Østersjøen:



**NORGE**  
SEAFOOD FROM NORWAY



# Jomfruhummeren er også:

- **Del av et utkastfiske:**
  - Ofte 30-60% små-hummer
  - Gjerne 60% torsk, hyse, flyndre etc
- **Del av bunnknusing:** Sjøstjerner, skjell, mark, habitat, struktur etc: hundrevis av tonn og fotballbaner årlig bare Nordsjøen



# Lakselus – villaks og etikk?

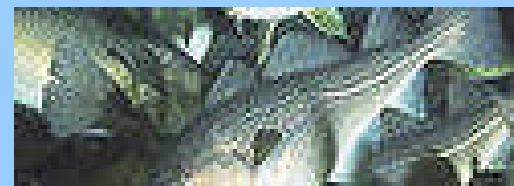


**NORGE**  
SEAFOOD FROM NORWAY

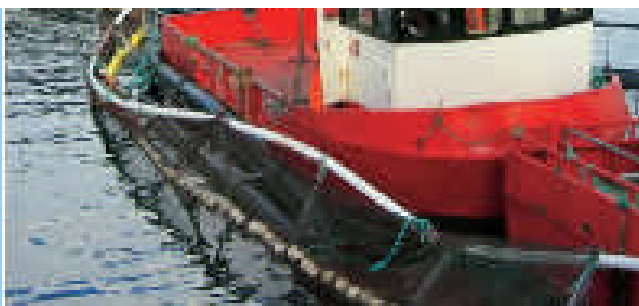




# Rømming?

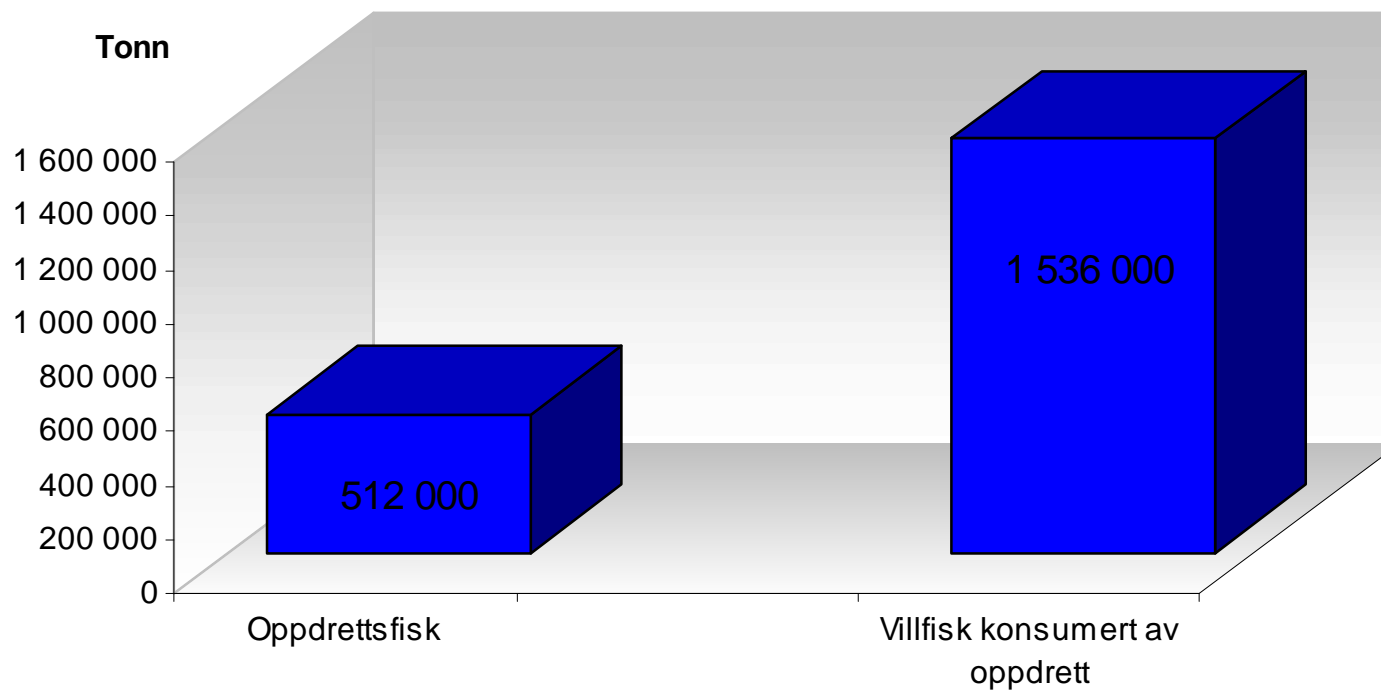


**NORGE**  
SEAFOOD FROM NORWAY



# Hvem har ansvar for oppdrettsfor?

Produksjon av laks og ørret i Norge (2002) og mengden villfisk forbrukt til å produsere oppdrettsfisken



# ... hvertfall i framtiden?

Norsk oppdrettsnærings behov for villfisk til fiskefôr

sk



**NORGE**  
SEAFOOD FROM NORWAY

2004 2005 2006 2007 2008 2009 2010 2011 2012 2013 2014 2015 2016 2017 2018 2019 2020

år

# Tenker oppdrettsnæringa på:

- Villaks og laksefjorder og rømming eller lakselus?
- Gyteområder for torsk og rømming??
- At det ikke er ubegrenset tilgang på for?

# Når skal norsk sjømat ta ansvar for medaljens bakside?

- WWF har allerede vist den på web:
  - <http://assets.panda.org/custom/flash/fishdish/index.html>
  - [http://www.panda.org/about\\_wwf/what\\_we\\_do/marine/help/seafood\\_lovers/fish\\_dishes/index.cfm](http://www.panda.org/about_wwf/what_we_do/marine/help/seafood_lovers/fish_dishes/index.cfm)
- Supermarkeder, forbrukere og merkevarer skjønner poenget
- Greenpeace og andre venter neppe lenge med å følge opp

# Hvem skal lede i Norge?



## Noen utfordringer:

- Fjern ”nåårsje”! Hva i all verden betyr det?
- Etabler merkevarer med klare **kriterier**, og selvfølgelig **full labeling**: *hva* slags fisk, *hvor* er den fisket, *hvordan*, og *hvor* i verden ble den prosessert?
- Krev økosystembasert **bestandsforvaltning**, ansvarlig

**GREENPEACE**