

# Lumpsucker – field use.

4th Sea Lice Multination

Trondheim 12.11.13

Nils Vestvik



# Effect!

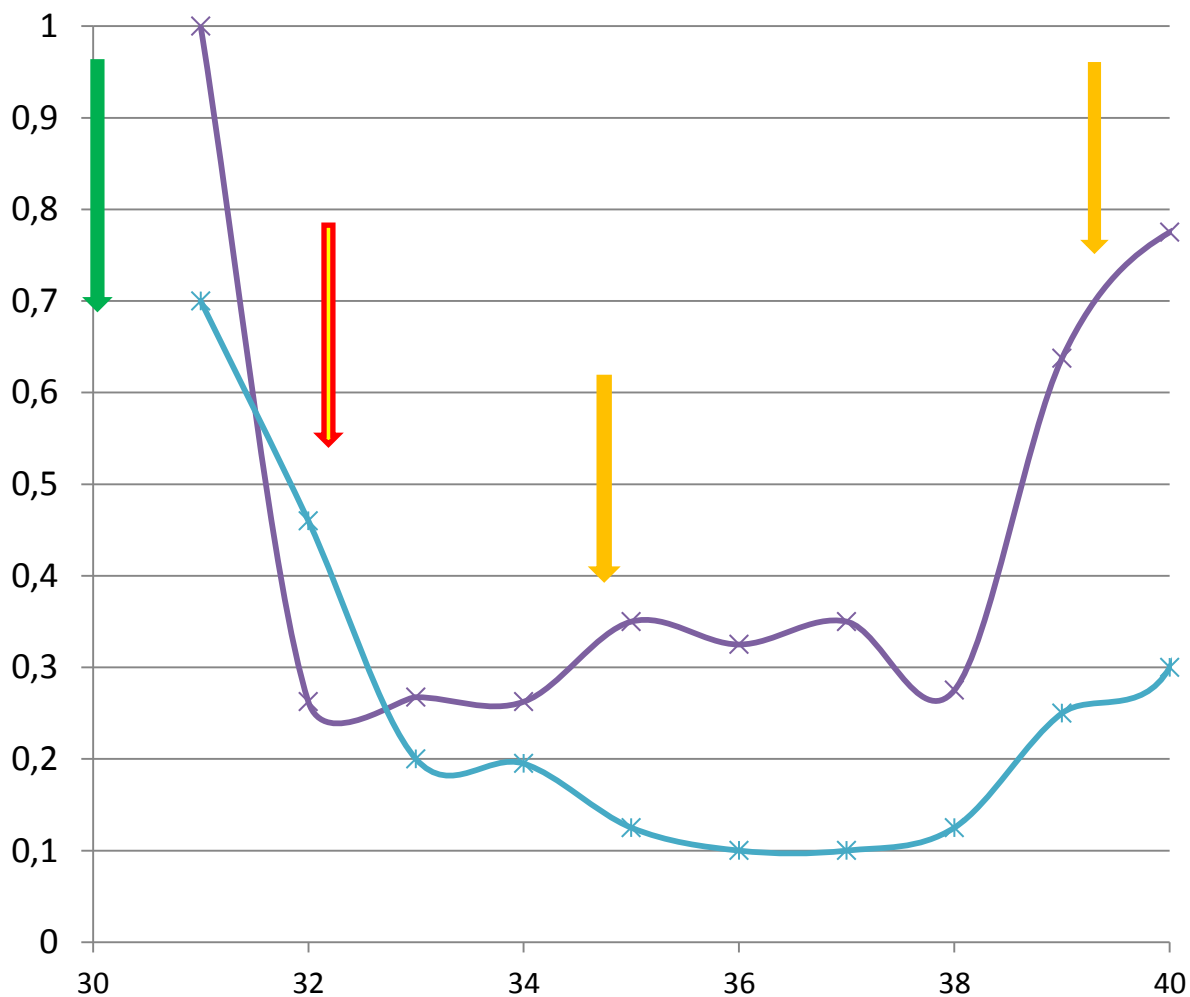
- Lice are easily found in the stomach of lumpsuckers.
- Both at high and low temperatures.
- Important to dissect the lumpsucker in the morning. (24% eaten lice at 8:30, 5,5% at 14:30)
- Where to catch the lumpsucker to get a representative fish?
  - \* Shelters: 36 % with lice
  - \* Close to the mesh: 13 % with lice



Picture above: Torbjørn Pedersen, FOMAS



# Site A, Autumn 2012



Showing adult females

Delousing all pens.

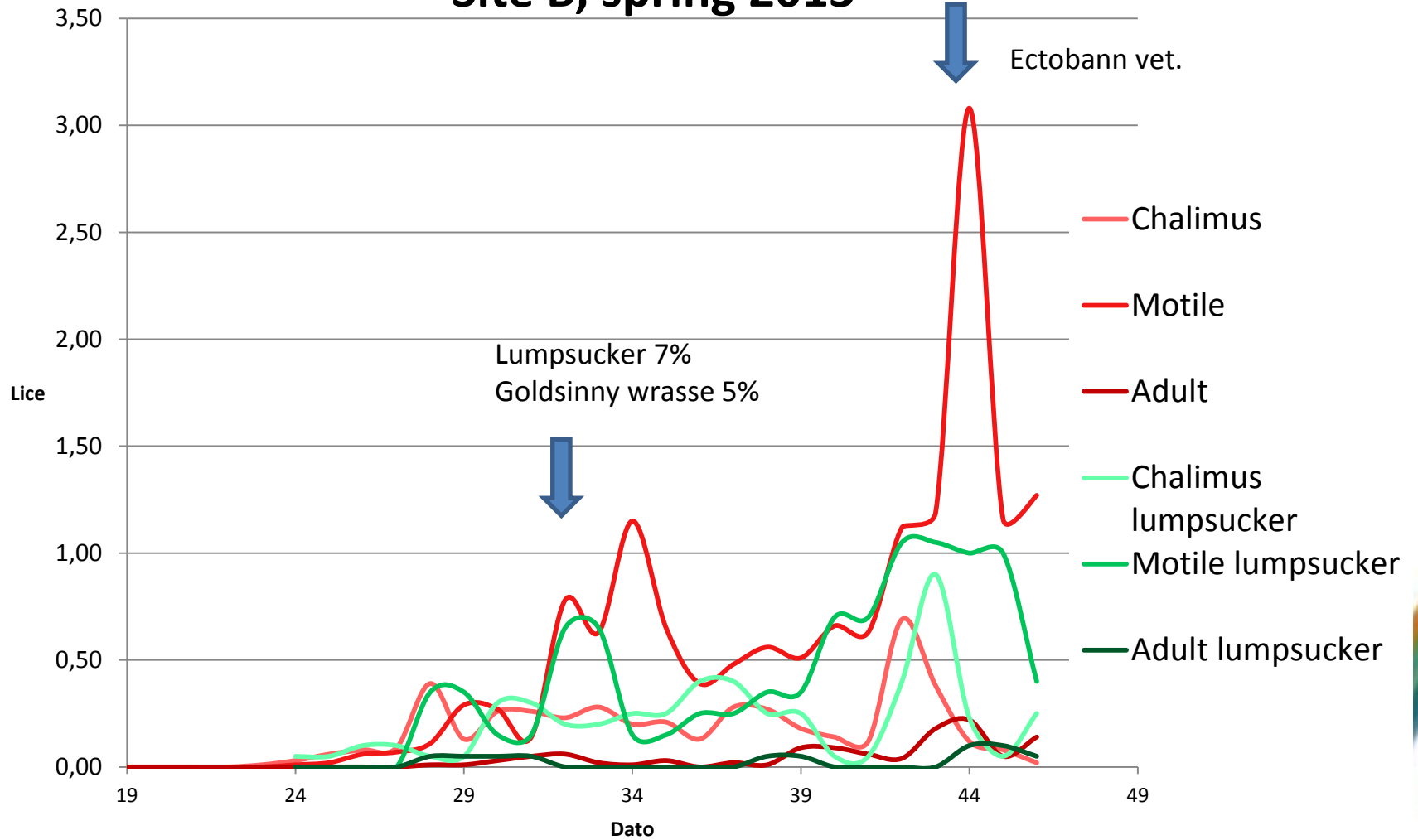
Delousing 4 pens without lumpsuckers

Lumpsucker added 2 pens.

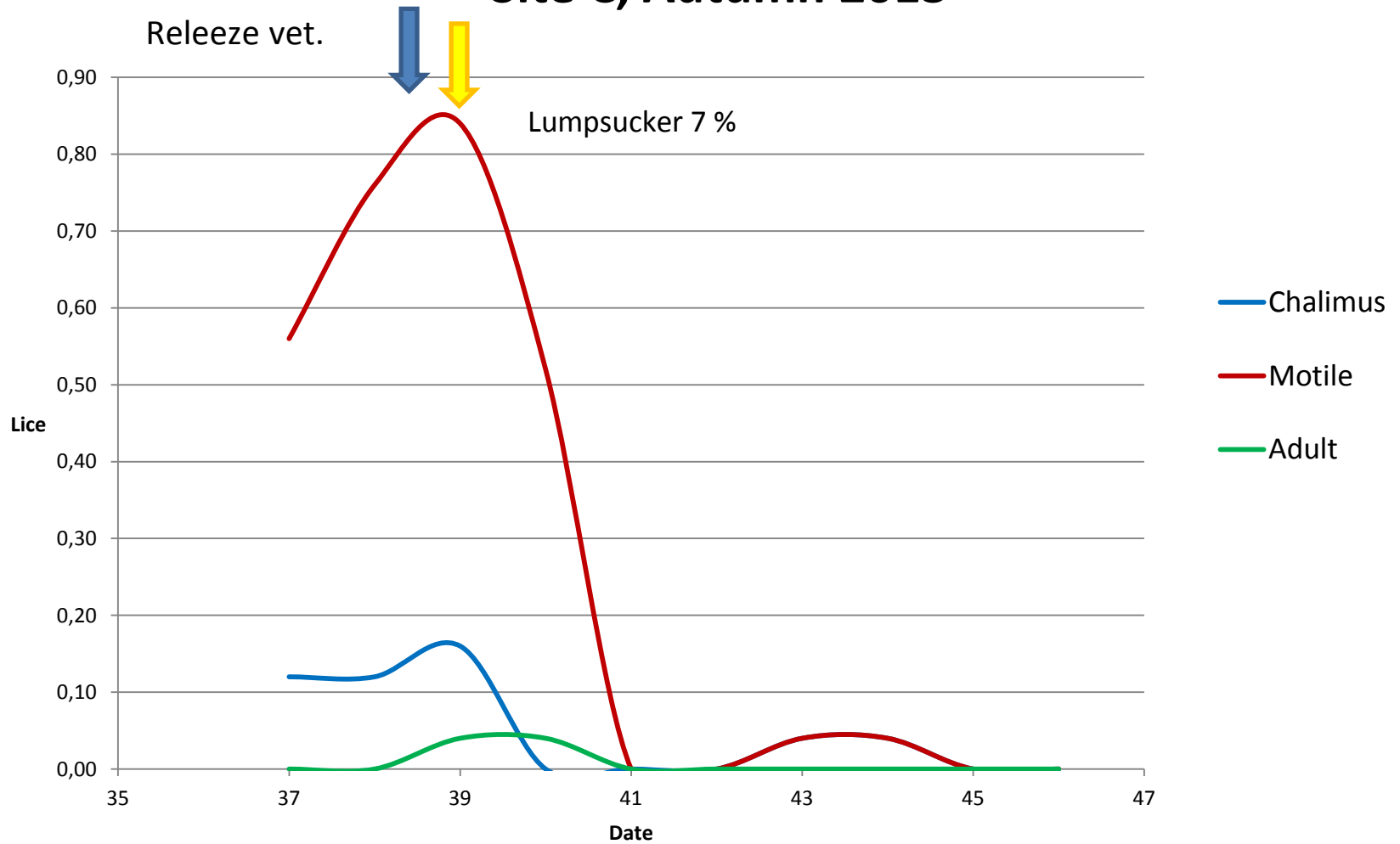
—x— Without lumpsuckers

—\*— With lumpsuckers

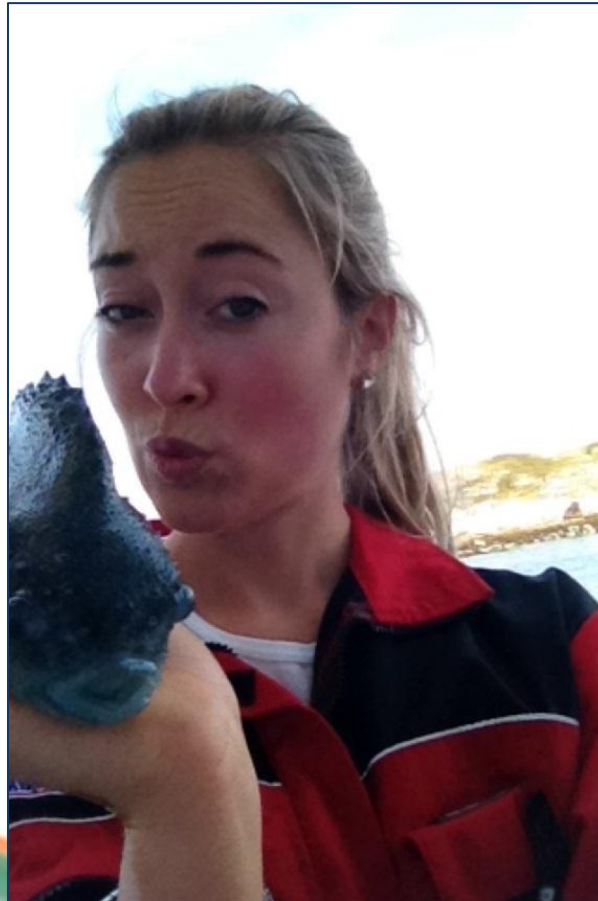
# Site B, spring 2013



# Site C, Autumn 2013



# How to succeed?



# Lumpsuckers and mesh size

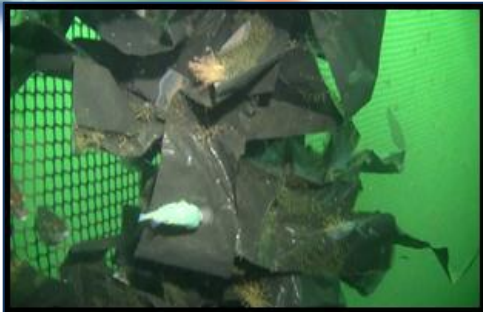
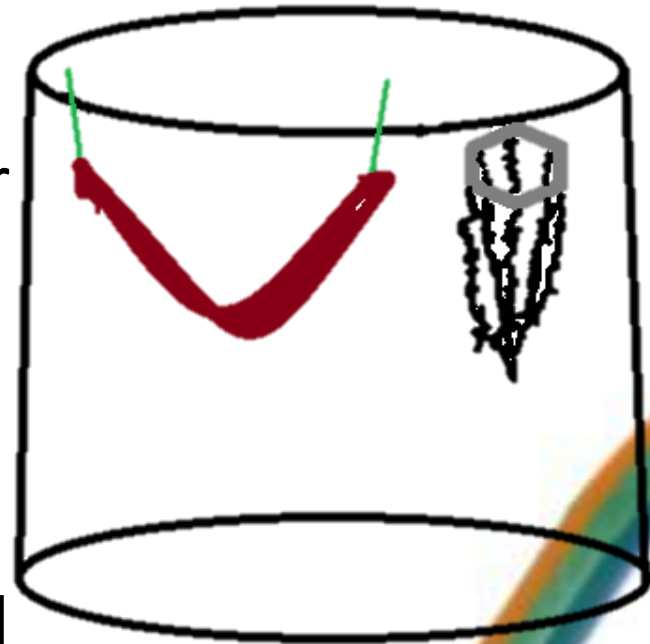
- The height of the lumpsucker should be equal or higher than the diagonal of the mesh in a stretched net.
- The size of the salmon should be taken into consideration as large lumpsuckers might eat smoltfeed.



Omfar	Mesh size(mm)	Height lumpsucker(mm)
18	35	49,5
20	31	43,8
22	29	41
24	26	36,8
26	24	33,9
28	22	31,1
30	21	29,7
32	19,5	27,6
38	16,5	23,3
40	13,5	21,9

# Shelters

- Shelters are essential to promote good effect as lice eaters and optimal welfare.
- Different shapes
- Placement:
  - Lumpsuckers use the entire water column
  - Shelters in or close to the site of feeding should be avoided



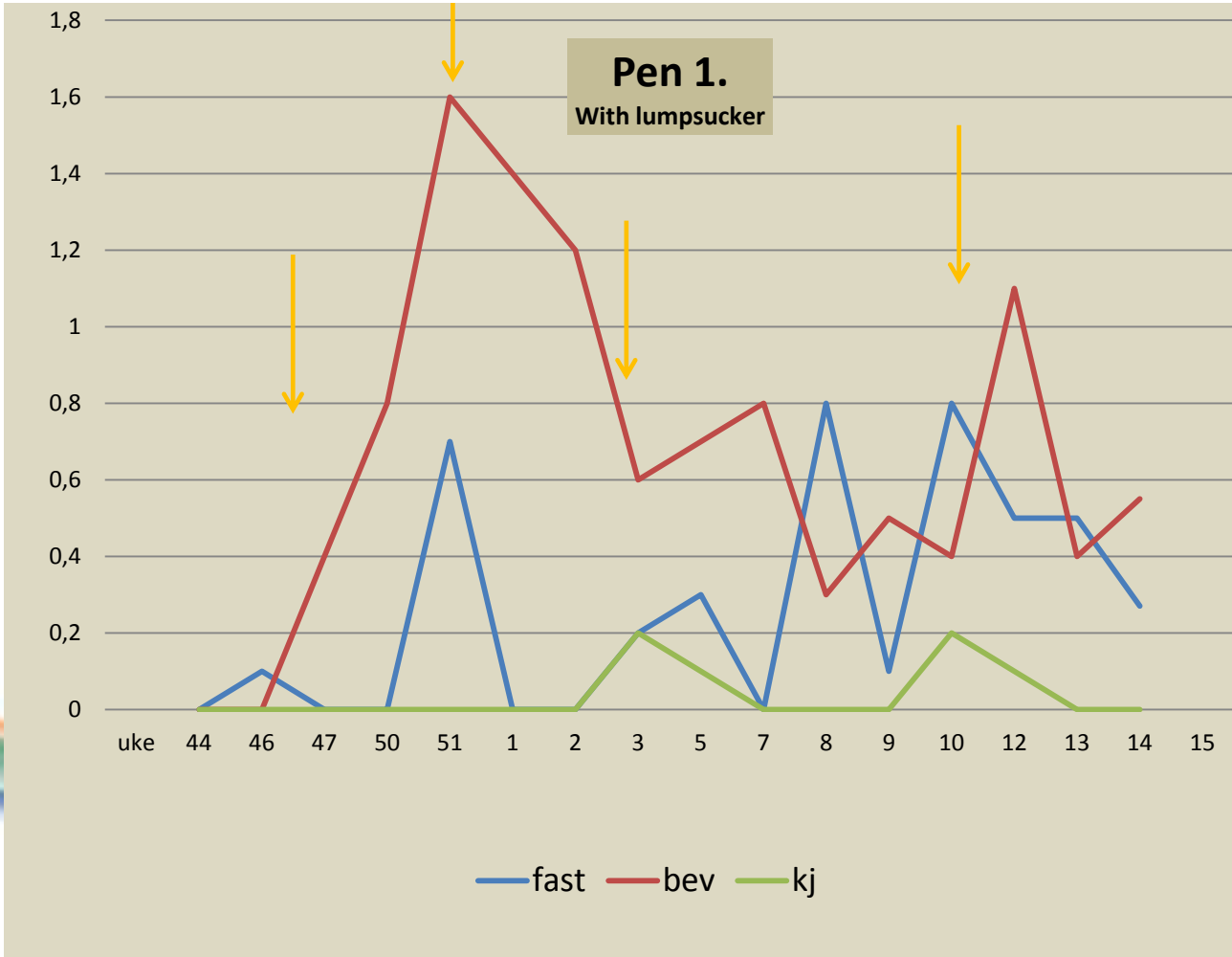


# Care and handling



- Lumpsuckers are active year round and additional feeding during the winter should be considered.
- Lumpsuckers are typical opportunists and eat what're available. Cleaning of the pens is essential!





# Main Challenges

- Available fish
- Health issues – diseases



# Thank you for your attention!

Don't hesitate to get in touch!

[nils@aqua-kompetanse.no](mailto:nils@aqua-kompetanse.no)

**Aqua Kompetanse**  
**7770 Flatanger**  
[www.aqua-kompetanse.no](http://www.aqua-kompetanse.no)

